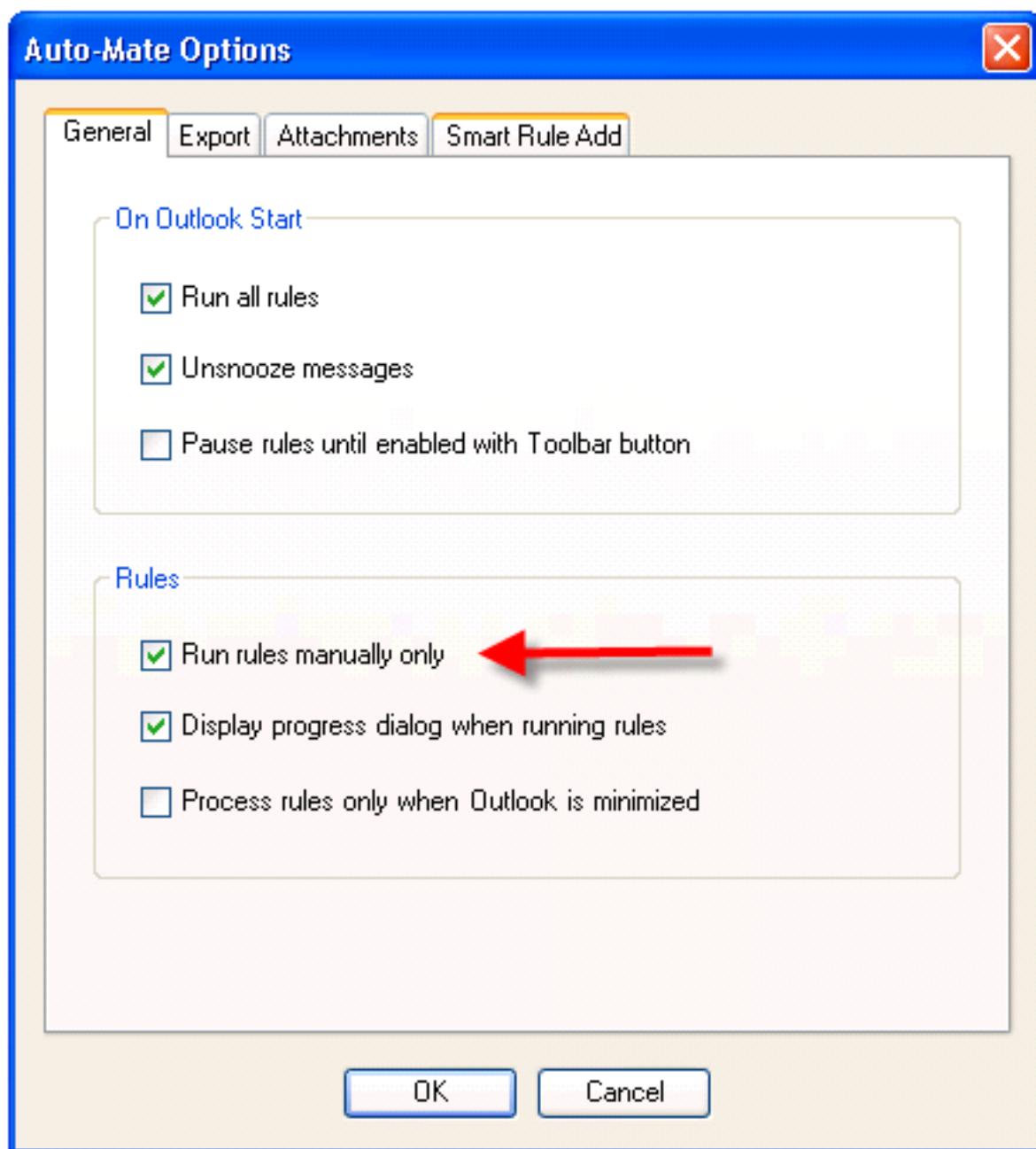


# Run rules manually

You can run the rules manually by setting this option:



You can run rules by clicking the toolbar run button.

There are plans to allow you to assign keyboard shortcuts to a rule in a future release.

---

Article ID: 13

Last updated: 21 Mar, 2008

Revision: 1

Auto-Mate 3.x -> How to's -> Run rules manually

<http://www.pergenex.com/kb/index.php?View=entry&EntryID=13>