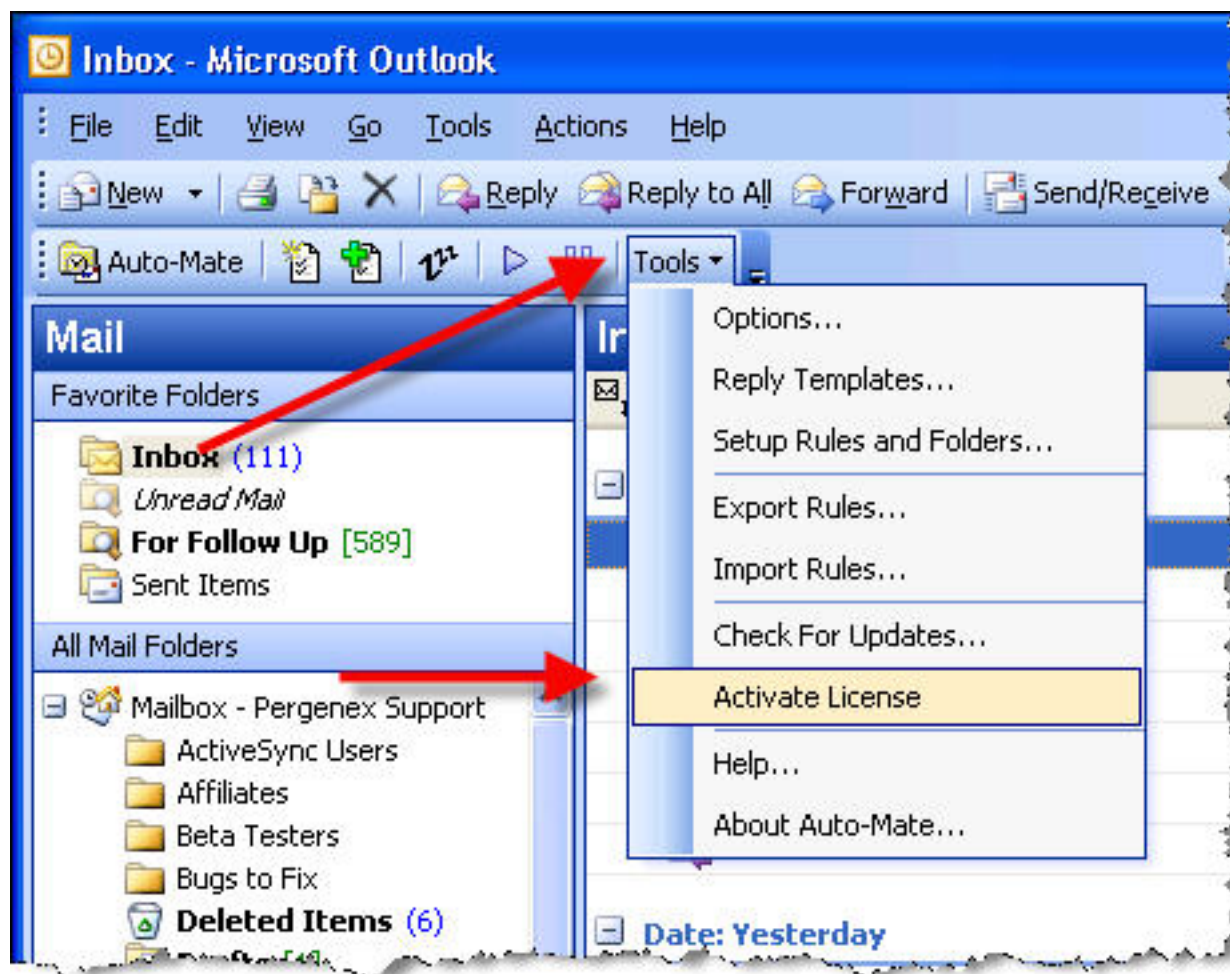


# How do I activate my Auto-Mate software?

From the Auto-Mate toolbar click the Tools button.



Then enter the activation key that was emailed to you after purchasing Auto-Mate:



Your company may require that you use a proxy server to communicate with outside services. In this case contact your System Administrator for the settings required on the *Configure Proxy* window.

---

Article ID: 4

Last updated: 04 Jan, 2008

Revision: 1

Auto-Mate 3.x -> How to's -> How do I activate my Auto-Mate software?

<http://www.pergenex.com/kb/index.php?View=entry&EntryID=4>