

Filtering Mail from sub-domains

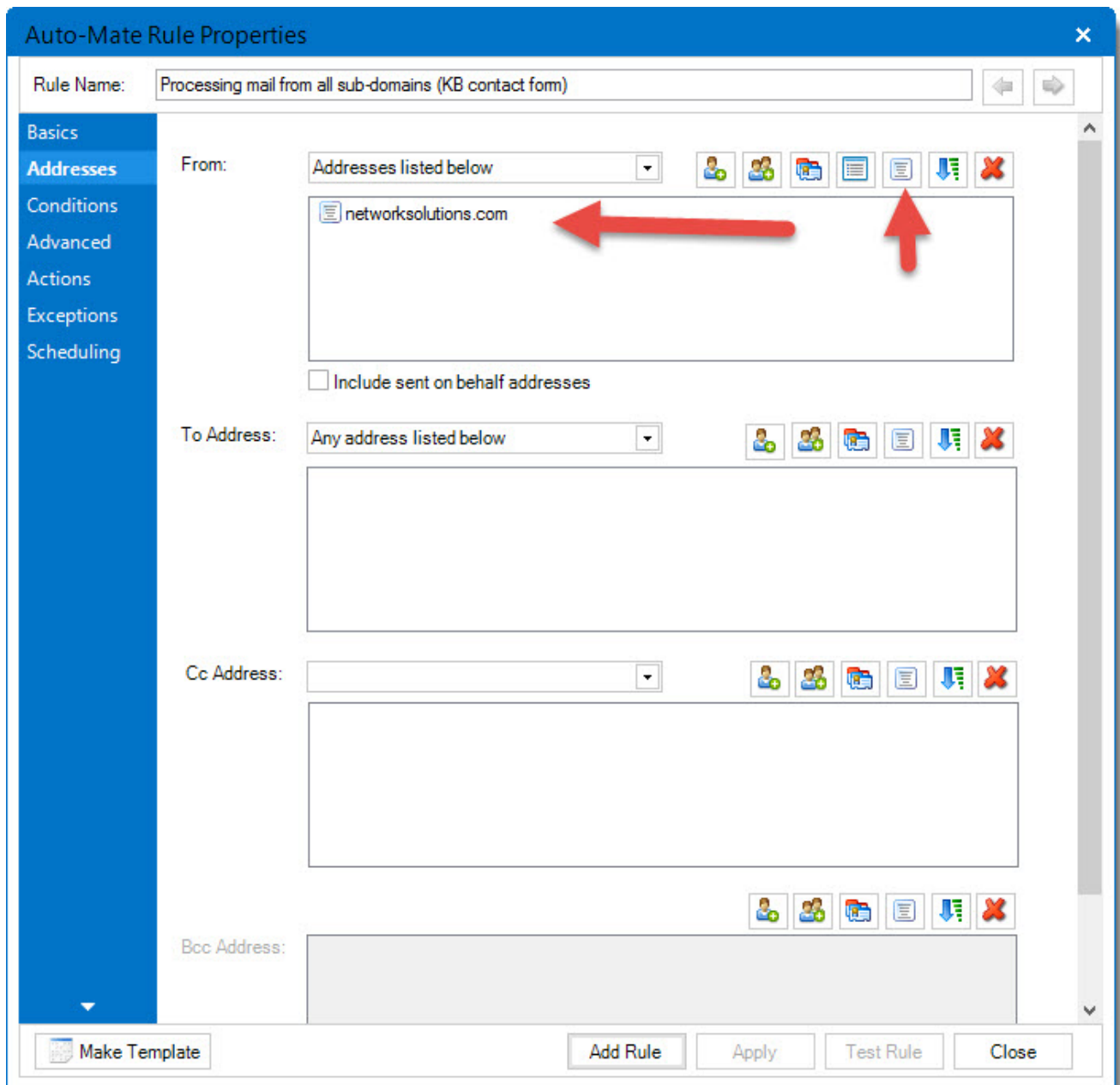
Question:

Network Solutions uses many subdomains to send email. For example, xxx@renewals.networksolutions.com and xxx@info1.networksolutions.com. Is there a way to create a rule that processes all of these without specifying the subdomain? I tried @*.networksolutions.com but that doesn't do it.

Answer:

If the email messages came from various names @networksolutions.com, you can enter @networksolutions.com to filter all of these but since they are different domains after the @ character, you need to use a different approach.

In version's 8 of Auto-Mate or greater, you can use match phrase in the from field. Click the icon above the field to insert a phrase and enter networksolutions.com.



Article ID: 54

Last updated: 24 Nov, 2015

Revision: 1

Auto-Mate v9.0 -> How-to's -> Filtering Mail from sub-domains

<http://www.pergenex.com/kb/index.php?View=entry&EntryID=54>